

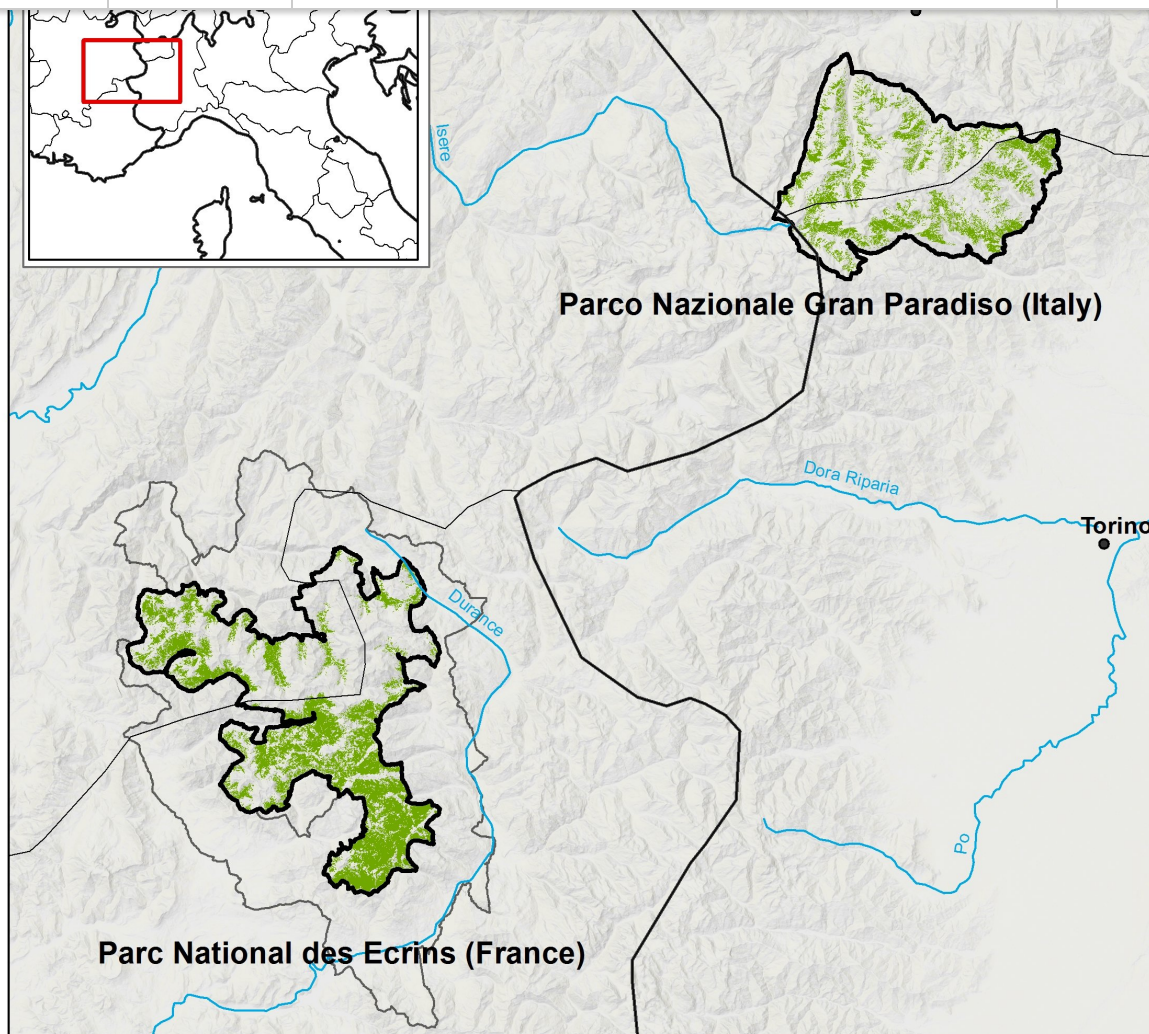


Welcome to the first newsletter of LIFE PASTORALP project!!

The PASTORALP eNewsletter will inform you about the progress, the results and the events of the project. The aim is to keep all relevant actors in the field of climate change impacts and adaptation strategies on Alpine pastures

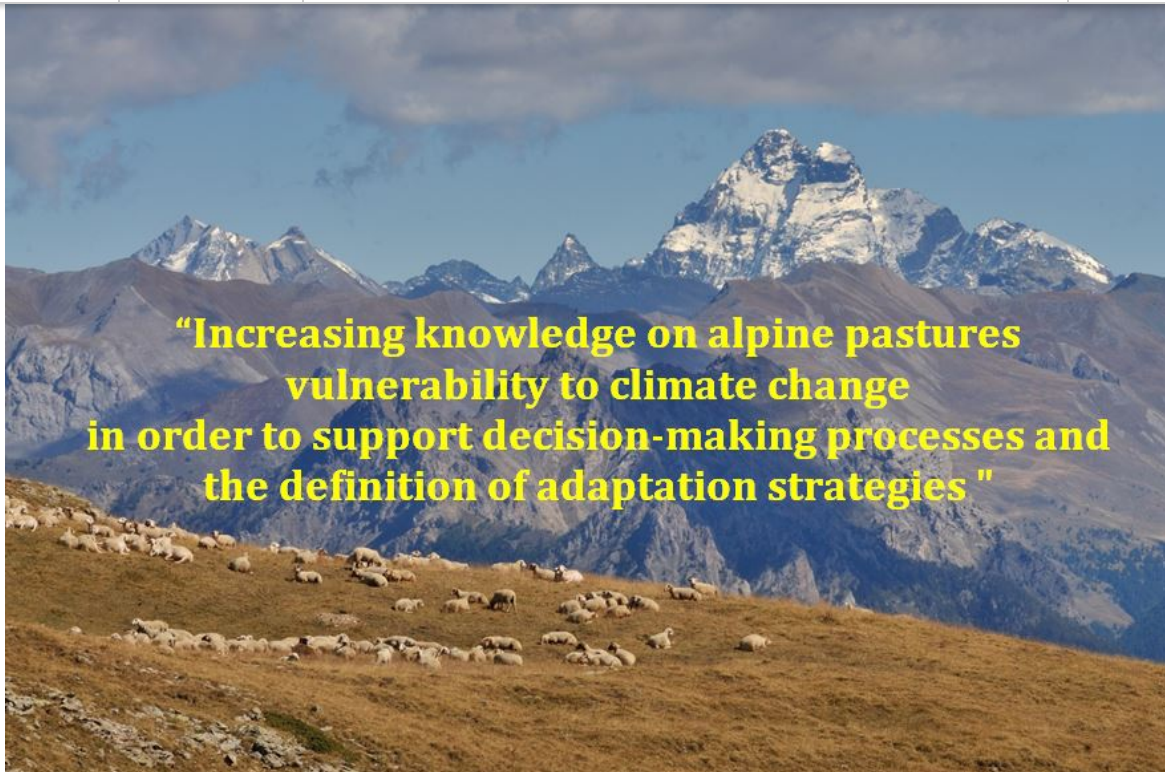
What is LIFE PASTORALP project?

PASTORALP ("Pastures vulnerability and adaptation strategies to climate change impacts in the Alps") is a LIFE project (LIFE16 CCA / IT / 000060) which aims to **reduce vulnerability** and **increase resilience** of **alpine pastoral systems hampered by a changing climate** evaluating and testing appropriate **adaptation measures**, leveraging the **knowledge of alpine ecosystems** and **identifying new strategies for adaptation** in two case studies: **National Park des Écrins** - FR and **Gran Paradiso National Park** - IT.



PASTORALP is coordinated by the **University of Florence (Department of Agri-Food Production and Environmental Sciences – DISPAA)**, and engages seven associated beneficiaries, four from France and three from Italy: **National Center for Scientific Research (CNRS - FR)**, **Institut National de la Recherche Agronomique (INRA - FR)**, **National Research Institute of Science and Technology for Environment and Agriculture (IRSTEA - FR)**, **Parc National des Écrins (PNE - IT)**, **Agenzia Regionale Protezione Ambiente - Valle d'Aosta (ARPA VDA - IT)**, **Institut Agricole Régional (IAR - IT)**, **Ente Parco Nazionale Gran Paradiso (PNGP - IT)**.

The project is co-financed by the LIFE programme under “Climate action” sub-program (2014-2020) and “Climate change adaptation” priority area. It has started on **1st October 2017** and will end on **30th March 2022**.



MAIN EXPECTED RESULTS

- Estimation of the alpine pastures **vulnerability** in two Alpine protected areas : Parc National des Écrins and Gran Paradiso National Park;
- assessment of the **integrated impacts of climate change** and **socio-economic changes** on alpine pastures farming systems;
- identification of **strategic adaptation measures** for pastoral areas in the two National Parks;
- evaluation and demonstration of the **feasibility** of adaptive measures in intended demonstration areas;
- Production of **guidelines and recommendations** for an enhanced decision-making effectiveness of pastures management at all policy levels;
- development of an **online platform** (PASTORALP platform tools) to support adoption of adaptation strategies;
- Promotion of climate change **proofing policies, practices** and **methodologies** in the development of future Rural Development Programmes;
- Increase **capacity building** of local communities/actors for coping with climate change impacts and adaptation on pastures;
- **Improvement** of the **effectiveness** of **European policies** on Alpine pastoral systems;
- **Reduction land abandonment** of rural mountain areas;
- **Strengthening** the **collaboration** between research and land management and between the two national parks.

These results will be achieved considering, identifying and promoting adaptation solutions based on ecosystem services provided by pastoral resources assessed on the basis of environmental, technical, economic and social criteria. Local stakeholders and communities will be involved throughout the project duration.

The implementation actions of the project

[Subscribe](#)[Past Issues](#)[Translate ▾](#)[RSS](#)[C2 Pastures typologies survey and mapping](#)

- C3 Environmental and socio-economic indicators
- C4 Modelling framework
- C5 Vulnerability analysis
- C6 Feasible adaptation strategies: identification and test on pilot areas
- Platform tools for adaptation improvement strategies: implementation, optimization and demonstrationC7
- C8 Development of an adaptation strategy plan and policy recommendations of alpine pastures to climate change impacts



Events

Several meetings, seminars, demonstration, launching events and workshops are planned during the project.

So far, the following meetings have been organized: the [kick-off meeting](#), and three launching events: [two in France](#) and one in [Italy](#). In addition, PASTORALP joined the meeting of the [LIFE Platform Meeting on Climate Change Adaptation in Agriculture and Forestry in the Mediterranean Region](#) organized by EASME in Madrid in March 2018.

KICK-OFF MEETING

Turin, 23-24 October 2017

The LIFE PASTORALP kick-off took place on 23-24 October at the Gran Paradiso National Park premise in Turin (IT)



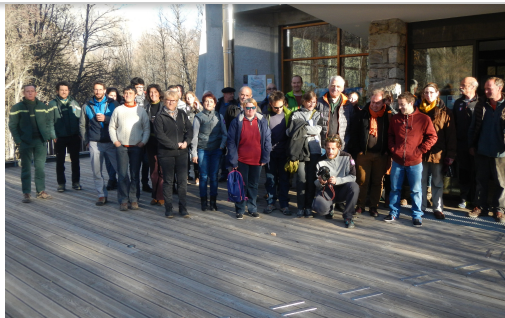
PROJECT LAUNCHING EVENTS

Parc National des Écrins – 12nd November 2017 and 11th December 2017

The 12nd November 2017 and the 11th December 2017, two launching events of LIFE PASTORALP took place at the Parc National des Écrins and about 60 people joined them.

The agenda was the following:

- Presentation of LIFE PASTORALP project
- Discussion on the ongoing and planned activities
- Presentation of how and where pastoral vegetation monitoring will be carried out
- Climate change impacts on pastoral resources (what do we know so far, what we'll investigate in PASTORALP)
- Pastoral vulnerability to climate change what do we know so far, what we'll investigate in PASTORALP
- Stakeholder expectation on PASTORALP outputs
- PNE Steering committee establishment.



Parco Nazionale Gran Paradiso – Noasca (TO) 29th April 2018

On April 29, 2018, in Noasca (TO), at the Gran Paradiso Park premises, the Launching event of the LIFE PASTORALP project took place. About 40 people, amongst farmers, decision making, shepherds, researchers and consultants, joined. During the day the objectives of the project, vulnerability of alpine pastures and the working methodology that we want to adopt were presented. A wide room was given for active and participative discussion so as to highlight the perception by local actors of climate changes on Alpine pastures. During the meeting the PNGP Steering Committee was formed.



NETWORKING

Approximately 10 months after the start of the project, the following networking activities were carried out:

Participation to the LIFE Platform Meeting on Climate Change Adaptation in Agriculture and Forestry in the Mediterranean Region

Madrid (ES) 13-14 March 2018

On March 13th-14th in Madrid (Spain) we joined the first [LIFE Platform Meeting on Climate Change Adaptation in Agriculture and Forestry in the Mediterranean Region](#), a relevant platform attended by several LIFE projects partners (about 30) dealing with CLIMATE issues on agriculture and forestry in the Mediterranean basin.

The aim of the meeting was to discuss on concrete measures to undertake so as to increase resilience of agriculture and forest ecosystems threatened by climate change in an area resulting very vulnerable to climate change (i.e the Mediterranean basin)

The meeting was organized by the Fundación Global Nature, partner of the LIFE AgriAdapt project in cooperation with the EASME and DG CLIMA. Also representative of the European Commission, local institutions, stakeholders and public and private companies joined the meeting.

The meeting was structured in 4 sessions and 4 Working groups and also field trips were organized so as to visit demonstration areas of the LIFE projects AgriAdapt and ENERBIOSCRUB.

The workshops were organized with the "World cafe" formula, so as to ensure a relevant participation in terms also

<http://ec.europa.eu/environment/life/news/events/events2018/march.htm#platform>.



PASTORALP team has activated networking with the following projects:

LIFE FORAGE4CLIMATE (LIFE15 CCM/IT/000039) Forage systems for less GHG emission and more soil carbon sink in continental and Mediterranean agricultural areas.

LIFE OREKAMENDIAN (LIFE15 NAT/ES/000805) Preservation of pastureland habitats in Basque mountains.

LIFE ADAPTAMED (LIFE14 CCA/ES/000612) Protection of the main ecosystem services through measures for climate change adaptation in the socio-ecological systems of the Mediterranean basin.

LIFE ADAPT2CLIMA (LIFE14 CCA/GR/00092) Adaptation to Climate change Impacts on the Mediterranean islands' Agriculture.

LIFE XERO-GRAZING (LIFE12 NAT/IT/000818) Conservation and recovery of the xero-thermal meadows of the Valle di Susa through pastoral management.

EUROMONTANA (European Association of Mountain areas)

Skype meetings have been organized with representatives of the projects to identify synergies and common activities with the projects. (see the networking section on the website).

PRESENTING LIFE PASTORALP PROJECT

LIFE PASTORALP was presented to the following conferences:

EUROPEAN GEOSCIENCES UNION GENERAL ASSEMBLY 2018, VIEN (AUSTRIA) 8–13 April. A scientific poster was presented: "The PastorAlp project: integrated strategies to manage pasture vulnerability to climate change in the Alps", Galvagno M., Dibari C., Cremonese E., Filppa G., Argenti G., Morra di Cella U., Bassignana M., Poggio L., Staglianò N



27TH EUROPEAN GRASSLAND FEDERATION GENERAL MEETING, Cork (Ireland), 17-21 June 2018. A

scientific poster was presented: "Alpine pasture vulnerability and adaptation strategies to climate change: the LIFE PASTORALP project". Dibari C., Argenti G., Bassignana M., Staglianò N., Bellocchi G., Bindi M.



MEDIA

The following articles were published on local magazines:

LE VOCI DEL PARCO: Il progetto europeo LIFE Pastoralp. Rendere i pascoli alpini meno vulnerabili ai cambiamenti climatici (giugno 2018)

LA SENTINELLA: Un progetto per salvare gli alpeggi del parco (7/05/2018)

IL RISVEGLIO POPOLARE: Sopravvivranno i pascoli del Parco Nazionale Gran Paradiso? (2/05/2018)

QUOTIDIANO DEL CANAVESE: Noasca – Dalla Toscana per studiare i pascoli del Gran Paradiso (29/04/2018)

LA SENTINELLA: Pascoli da proteggere un progetto per il parco (27/04/2018)

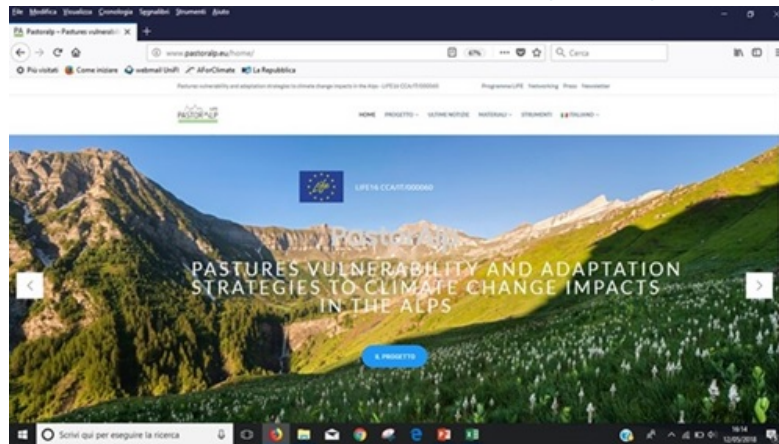
LA STAMPA: Uno studio per salvare i pascoli del Parco del Gran Paradiso (27/04/2018)

LA STAMPA: Dalla toscana studi sui pascoli del Gran Paradiso (26/04/2018)

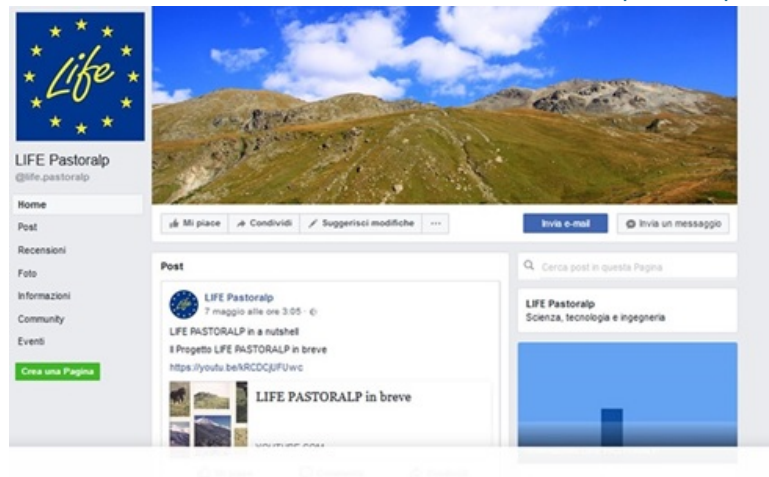
LA VOCE: NOASCA. Quale futuro per i pascoli del Gran Paradiso? (24/04/2018)

FOR MORE INFORMATION

OFFICIAL PROJECT WEBSITE: www.pastoralp.eu



PROJECT FACEBOOK: www.facebook.com/life.pastoralp/



LIFE Ref. No: LIFE16 CCA/IT/000060

Implementation areas: Parc National des Écrins - FR and National Park Gran Paradiso - IT

Duration: 54 months (01/10/2017 - 30/03/2022)

Budget: 2,314,400 €



Subscribe

Past Issues

Translate ▾

RSS



UNIVERSITÀ
DEGLI STUDI
FIRENZE
DISPAA
DIPARTIMENTO DI SCIENZE DELLE
PRODUZIONE AGROALIMENTARI
E DELL'AMBIENTE



PASTORALP eNewsletter

Contacts: camilla.dibari@unifi.it

Do you want to change the way you receive these e-mails?
You can update your preferences or unsubscribe from this list.



This email was sent to <<Email Address>>
[why did I get this?](#) [unsubscribe from this list](#) [update subscription preferences](#)
Academia · piazzale delle Cascine 18 · Firenze, Fi 50144 · Italy

